

Premium Flush Glazed Fiberglass Entry Doors



Our Doors

American-Classic Series

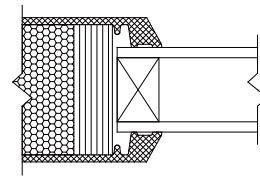
MaxCraft's flush glazed American-Classic fiberglass entry doors are designed to match the beauty of natural wood doors with minimum maintenance. Quality features include solid polyurethane foam core for high energy efficiency, all composite capped stiles and rails to prevent moisture penetration and full length lock block for added security. Doors are available in Mahogany grain, Douglas Fir grain and paint grade smooth.

Our most innovative fiberglass flush glazed TDL doors feature **integral molded fiberglass muntin TDL bars**. With beveled glass unit glazed between TDL muntin bars, these uniquely engineered doors offer the same beautiful natural wood door look that complements a wide range of architectural styles from Craftsman or French Colonial to Rustic or cottage style homes.

SDL Ultimate doors feature **integral molded fiberglass SDL bars** on both sides of the glass with internal spacers. As the SDL bars are of one-piece construction with the door skin, these doors just look like elegant wood doors.

TrueFlex Series

The TrueFlex Series doors are designed with very light Douglas Fir grain to duplicate natural Douglas Fir wood doors. Such a smart design provides you a door with the flexibility for both stain grade and paint grade applications. They look just like Fir doors after staining. If painted, they look like painted wood doors with fine brush strokes. The contemporary beveled sticking design makes it very easy to cut and apply SDL bars. We offer molded fiberglass SDL bars with the same light Douglas Fir grain to match the doors.



Beveled sticking



Molded Fiberglass SDL bar

Available fiberglass SDL bar widths: 7/8", 1 1/8" and 3 1/2".

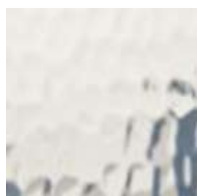
IronMax Series

MaxCraft is proud to introduce the IronMax Series of flush glazed smooth fiberglass doors with one goal in mind – to offer you a dream entry door that features the unmatched luxury of wrought iron doors with the energy efficiency of fiberglass doors. These uniquely designed doors resemble the high end look of wrought iron doors but without the drawbacks associated with traditional wrought iron doors.

Standard Prehung Features

- ▶ 4 9/16", 5 1/4" or 6 9/16" composite jambs and 2" composite brickmould will never rot
- ▶ Stainless steel ball bearing hinges provide lasting smooth operation; Available in oil rubbed bronze (ORB) and satin nickel
- ▶ Adjustable sill with composite substrate. Available in dark bronze and mill finish
- ▶ Finished colors shown in this literature are for illustration purposes only
- ▶ **LIFETIME LIMITED WARRANTY**

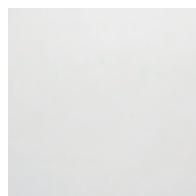
Privacy Glass Options



Flemish



Rain



Frosted



Reeded



Arctic

Low-E Clear Bevels

AM = American-Classic Mahogany

AF = American-Classic Fir



AM78206
2'6" x 6'8"
2'8" x 6'8"
3'0" x 6'8"



AM78406
10" x 6'8"
12" x 6'8"
14" x 6'8"



AM78706
2'6" x 8'0"
2'8" x 8'0"
3'0" x 8'0"



AM78756
10" x 8'0"
12" x 8'0"
14" x 8'0"



AM78606D
3'0" x 8'0"
3'6" x 8'0"

Available prehung
or in kits



AM78806DD
5'0" x 8'0"
5'4" x 8'0"
6'0" x 8'0"

Available prehung or in kits

Fiberglass Dentil Shelf



DS04



AF78203
2'6" x 6'8"
3'0" x 6'8"



AF78403
10" x 6'8"
12" x 6'8"
14" x 6'8"



AF78206
3'0" x 6'8"



AF78406
10" x 6'8"
12" x 6'8"
14" x 6'8"



AF78703
3'0" x 8'0"



AF78706
3'0" x 8'0"

SDL ULTIMATE

Low-E Clear or Choice of Privacy Glass on Page 2

AM = American-Classic Mahogany

Integral Molded
Fiberglass SDL Grilles with
Internal Spacers

1-lite doors are available

							
AM28204 2'6" x 6'8" 2'8" x 6'8" 3'0" x 6'8" 3'6" x 6'8"	AM28404 10" x 6'8" 12" x 6'8" 14" x 6'8"	AM28206 2'6" x 6'8" 2'8" x 6'8" 3'0" x 6'8" 3'6" x 6'8"	AM28406 10" x 6'8" 12" x 6'8" 14" x 6'8"	AM28704 2'6" x 8'0" 2'8" x 8'0" 3'0" x 8'0" 3'6" x 8'0"	AM28724 10" x 8'0" 12" x 8'0" 14" x 8'0"	AM28706 2'6" x 8'0" 2'8" x 8'0" 3'0" x 8'0" 3'6" x 8'0"	AM28726 10" x 8'0" 12" x 8'0" 14" x 8'0"

			
AM28606D 3'0" x 8'0" 3'6" x 8'0" Available prehung or in kits	AM28906D 3'0" x 8'0" Available prehung or in kits	AM28804DD 5'0" x 8'0" 5'4" x 8'0" 6'0" x 8'0" Available prehung or in kits	AM28806DD 5'0" x 8'0" 5'4" x 8'0" 6'0" x 8'0" Available prehung or in kits

SDL ULTIMATE

Low-E Clear or Choice of Privacy Glass on Page 2

AF = American-Classic Fir

1-lite doors are available

Integral Molded
Fiberglass SDL Grilles with
Internal Spacers



AF28203
2'6" x 6'8"
3'0" x 6'8"



AF28403
10" x 6'8"
12" x 6'8"
14" x 6'8"



AF28204
2'6" x 6'8"
3'0" x 6'8"



AF28206
2'6" x 6'8"
3'0" x 6'8"



AF28406
10" x 6'8"
12" x 6'8"
14" x 6'8"



AF28703
3'0" x 8'0"



AF28803
10" x 8'0"
12" x 8'0"
14" x 8'0"



AF28704
3'0" x 8'0"



AF28706
3'0" x 8'0"



AF28806
10" x 8'0"
12" x 8'0"
14" x 8'0"

MAXTEND

Low-E Clear or Choice of Privacy Glass on Page 2

AS = American-Classic Smooth

Matching sidelites and transoms are available



AS4823
2'6" x 6'8"
2'8" x 6'8"
3'0" x 6'8"
3'6" x 6'8"



AS4824
2'6" x 6'8"
2'8" x 6'8"
3'0" x 6'8"
3'6" x 6'8"



AS4825
2'6" x 6'8"
2'8" x 6'8"
3'0" x 6'8"
3'6" x 6'8"



AS4873
2'6" x 8'0"
2'8" x 8'0"
3'0" x 8'0"
3'6" x 8'0"



AS4874
2'6" x 8'0"
2'8" x 8'0"
3'0" x 8'0"
3'6" x 8'0"



AS4875
2'6" x 8'0"
2'8" x 8'0"
3'0" x 8'0"
3'6" x 8'0"



AS4876
2'6" x 8'0"
2'8" x 8'0"
3'0" x 8'0"
3'6" x 8'0"

EURO

Low-E Clear or Choice of Privacy Glass on Page 2

AS = American-Classic Smooth

Matching sidelites and transoms are available

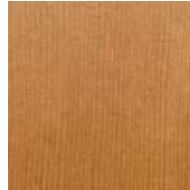


AS38201
2'6" x 6'8"
2'8" x 6'8"
3'0" x 6'8"

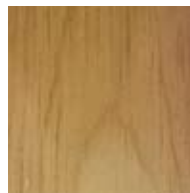


AS38701
2'6" x 8'0"
2'8" x 8'0"
3'0" x 8'0"

Optional Interiors



Natural VG Fir



Natural Pine



AS38206
2'6" x 6'8"
2'8" x 6'8"
3'0" x 6'8"



AS38208
2'6" x 6'8"
2'8" x 6'8"
3'0" x 6'8"



AS38706
2'6" x 8'0"
2'8" x 8'0"
3'0" x 8'0"



AS38708
2'6" x 8'0"
2'8" x 8'0"
3'0" x 8'0"



AS38710
2'6" x 8'0"
2'8" x 8'0"
3'0" x 8'0"

SLIMCRAFT

Low-E Clear or Choice of Privacy Glass on Page 2

AS = American-Classic Smooth

Doors without lock blocks can be used as sidelites/stationary doors. They can also be used as operable doors by using our super slim locksets. Matching sidelites and transoms are available.



AS40201
2'6" x 6'8"
2'8" x 6'8"
3'0" x 6'8"



AS40201NLB
2'6" x 6'8"
2'8" x 6'8"
3'0" x 6'8"



AS40203
2'6" x 6'8"
2'8" x 6'8"
3'0" x 6'8"



AS40203NLB
2'6" x 6'8"
2'8" x 6'8"
3'0" x 6'8"



AS40206
2'6" x 6'8"
2'8" x 6'8"
3'0" x 6'8"



AS40206NLB
2'6" x 6'8"
2'8" x 6'8"
3'0" x 6'8"



AS40701
2'6" x 8'0"
2'8" x 8'0"
3'0" x 8'0"



AS40701NLB
2'6" x 8'0"
2'8" x 8'0"
3'0" x 8'0"



AS40704
2'6" x 8'0"
2'8" x 8'0"
3'0" x 8'0"



AS40704NLB
2'6" x 8'0"
2'8" x 8'0"
3'0" x 8'0"



AS40708
2'6" x 8'0"
2'8" x 8'0"
3'0" x 8'0"



AS40708NLB
2'6" x 8'0"
2'8" x 8'0"
3'0" x 8'0"

SDL

Low-E Clear or Choice of Privacy Glass on Page 2

TF = TrueFlex

Our 1-lite TrueFlex doors are designed to be used with our fiberglass SDL bars with matching light Fir grain. The finished SDL doors look much more like natural Douglas Fir wood doors than other fiberglass doors with vinyl SDL bars.



TF28201
2'6" x 6'8"
2'8" x 6'8"
3'0" x 6'8"



TF28241
10" x 6'8"
12" x 6'8"
14" x 6'8"



TF28301
3'0" x 6'8"



TF28261
10" x 6'8"
12" x 6'8"
14" x 6'8"



TF28251
10" x 6'8"
12" x 6'8"
14" x 6'8"



TF28701
2'6" x 8'0"
2'8" x 8'0"
3'0" x 8'0"



TF28741
10" x 8'0"
12" x 8'0"
14" x 8'0"

Help to Reduce
Your SKU's by as much as
50%

SDL ULTIMATE

Low-E Clear or Choice of Privacy Glass on Page 2

IC = IronMax



IC28206
 2'6" x 6'8"
 2'8" x 6'8"
 3'0" x 6'8"



IC28704
 2'6" x 8'0"
 2'8" x 8'0"
 3'0" x 8'0"



IC28706
 2'6" x 8'0"
 2'8" x 8'0"
 3'0" x 8'0"



IC28606D
 3'0" x 8'0"
 3'6" x 8'0"
Available prehung or in kits



IC28804DD
 5'0" x 8'0"
 5'4" x 8'0"
 6'0" x 8'0"
Available prehung or in kits



IC28806DD
 5'0" x 8'0"
 5'4" x 8'0"
 6'0" x 8'0"
Available prehung or in kits

SLIMCRAFT

Low-E Clear or Choice of Privacy Glass on Page 2

IC = IronMax

Matching sidelites and transoms are available



IC40201
2'6" x 6'8"
2'8" x 6'8"
3'0" x 6'8"

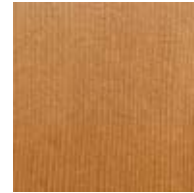


IC40203
2'6" x 6'8"
2'8" x 6'8"
3'0" x 6'8"

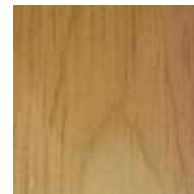


IC40206
2'6" x 6'8"
2'8" x 6'8"
3'0" x 6'8"

Optional Interiors



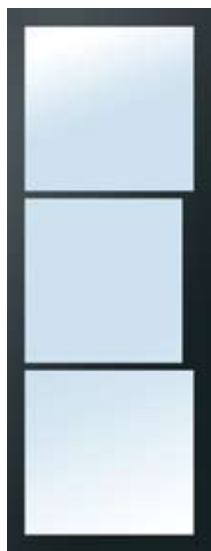
Natural VG Fir



Natural Pine



IC40701
2'6" x 8'0"
2'8" x 8'0"
3'0" x 8'0"



IC40703
2'6" x 8'0"
2'8" x 8'0"
3'0" x 8'0"



IC40704
2'6" x 8'0"
2'8" x 8'0"
3'0" x 8'0"



IC40706
2'6" x 8'0"
2'8" x 8'0"
3'0" x 8'0"



IC40708
2'6" x 8'0"
2'8" x 8'0"
3'0" x 8'0"

SLIMCRAFT

Low-E Clear or Choice of Privacy Glass on Page 2

IC = IronMax

Doors without lock blocks can be used as sidelites/stationary doors. They can also be used as operable doors by using our super slim locksets as shown on back cover. Matching sidelites and transom are available.



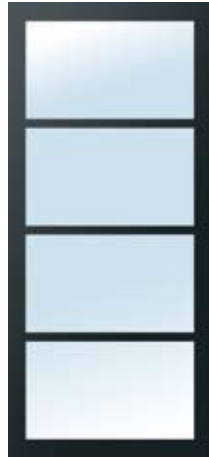
IC40201NLB
 2'6" x 6'8"
 2'8" x 6'8"
 3'0" x 6'8"



IC40203NLB
 2'6" x 6'8"
 2'8" x 6'8"
 3'0" x 6'8"



IC40206NLB
 2'6" x 6'8"
 2'8" x 6'8"
 3'0" x 6'8"



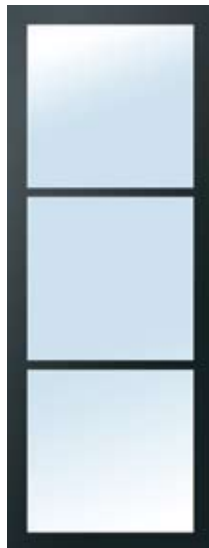
IC40204NLB
 2'6" x 6'8"
 2'8" x 6'8"
 3'0" x 6'8"



IC40208NLB
 2'6" x 6'8"
 2'8" x 6'8"
 3'0" x 6'8"



IC40701NLB
 2'6" x 8'0"
 2'8" x 8'0"
 3'0" x 8'0"



IC40703NLB
 2'6" x 8'0"
 2'8" x 8'0"
 3'0" x 8'0"



IC40706NLB
 2'6" x 8'0"
 2'8" x 8'0"
 3'0" x 8'0"



IC40704NLB
 2'6" x 8'0"
 2'8" x 8'0"
 3'0" x 8'0"



IC40708NLB
 2'6" x 8'0"
 2'8" x 8'0"
 3'0" x 8'0"

SLIMCRAFT

Low-E Clear or Choice of Privacy Glass on Page 2

IC = IronMax

Matching sidelites and transoms are available



IC40216
2'6" x 6'8"
2'8" x 6'8"
3'0" x 6'8"



IC40716
2'6" x 8'0"
2'8" x 8'0"
3'0" x 8'0"



IC40806
5'0" x 8'0"
5'4" x 8'0"
6'0" x 8'0"

Available prehung or in kits



IC40784DD
5'0" x 8'0"
5'4" x 8'0"
6'0" x 8'0"

Available prehung or in kits



IC40788DD
5'0" x 8'0"
5'4" x 8'0"
6'0" x 8'0"

Available prehung or in kits

MAXTREND

Low-E Clear or Choice of Privacy Glass on Page 2

IC = IronMax

Matching sidelites and transoms are available



IC4823
2'6" x 6'8"
2'8" x 6'8"
3'0" x 6'8"
3'6" x 6'8"



IC4824
2'6" x 6'8"
2'8" x 6'8"
3'0" x 6'8"
3'6" x 6'8"



IC4825
2'6" x 6'8"
2'8" x 6'8"
3'0" x 6'8"
3'6" x 6'8"



IC4873
2'6" x 8'0"
2'8" x 8'0"
3'0" x 8'0"
3'6" x 8'0"



IC4874
2'6" x 8'0"
2'8" x 8'0"
3'0" x 8'0"
3'6" x 8'0"



IC4875
2'6" x 8'0"
2'8" x 8'0"
3'0" x 8'0"
3'6" x 8'0"



IC4876
2'6" x 8'0"
2'8" x 8'0"
3'0" x 8'0"
3'6" x 8'0"

EURO

Low-E Clear or Choice of Privacy Glass on Page 2

IC = IronMax

Matching sidelites and transoms are available



IC38201
2'6" x 6'8"
2'8" x 6'8"
3'0" x 6'8"
3'6" x 6'8"



IC38203
2'6" x 6'8"
2'8" x 6'8"
3'0" x 6'8"
3'6" x 6'8"



IC38204
2'6" x 6'8"
2'8" x 6'8"
3'0" x 6'8"
3'6" x 6'8"



IC38206
2'6" x 6'8"
2'8" x 6'8"
3'0" x 6'8"
3'6" x 6'8"



IC38208
2'6" x 6'8"
2'8" x 6'8"
3'0" x 6'8"
3'6" x 6'8"



IC38701
2'6" x 8'0"
2'8" x 8'0"
3'0" x 8'0"
3'6" x 8'0"



IC38703
2'6" x 8'0"
2'8" x 8'0"
3'0" x 8'0"
3'6" x 8'0"



IC38704
2'6" x 8'0"
2'8" x 8'0"
3'0" x 8'0"
3'6" x 8'0"



IC38706
2'6" x 8'0"
2'8" x 8'0"
3'0" x 8'0"
3'6" x 8'0"



IC38708
2'6" x 8'0"
2'8" x 8'0"
3'0" x 8'0"
3'6" x 8'0"



MaxCraft Doors, Inc.
www.maxcraftdoors.com

© 2024 MaxCraft Doors, Inc.